

UMHLANGA ARCH

REGION: Umhlanga Ridge, KZN

NOMINATED BY: Cousins Steel International

**PROJECT
NOMINATION**



THE PROJECT BRIEF

CLIENT: Multiply Group

ARCHITECTS: Craft Of Architecture

MAIN CONTRACTOR: WBHO

THE PROJECT OVERVIEW



PROJECT OVERVIEW

STRUCTURAL STEELWORK

Project Completed: October 2020

Steelwork Completed: September 2020

Tonnage: 15 tonnes

Profiles used: Universal beams, SHS and pipes



steel AWARDS
2022
recognising and rewarding excellence

PROJECT OVERVIEW

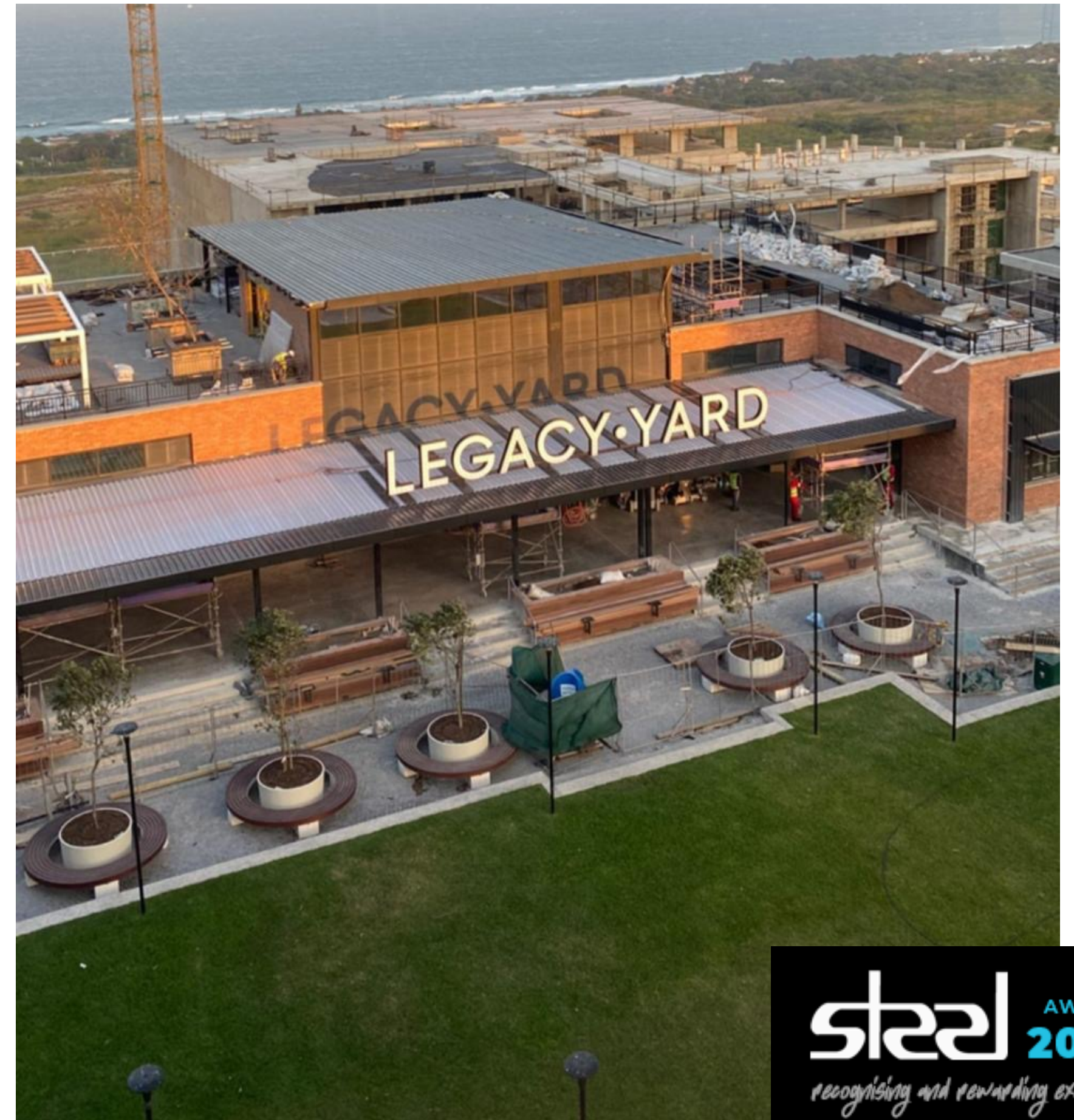
STRUCTURAL STEELWORK

Structural Engineer: Struxit

Steelwork Contractor: Cousins Steel International

Steel Detailer: CSI

Steel Merchant: CSI



steel AWARDS
2022
recognising and rewarding excellence

PROJECT OVERVIEW

METAL CLADDING AND ROOFING

Project Completed: October 2020

Cladding Completed: October 2020

Cladding Material Used: Colorplus AZ200 & Diffuser

Cladding Profile: IBR 686

Cladding Area Coverage: 350 sqm

Cladding Tonnage: 1.5 tonnes



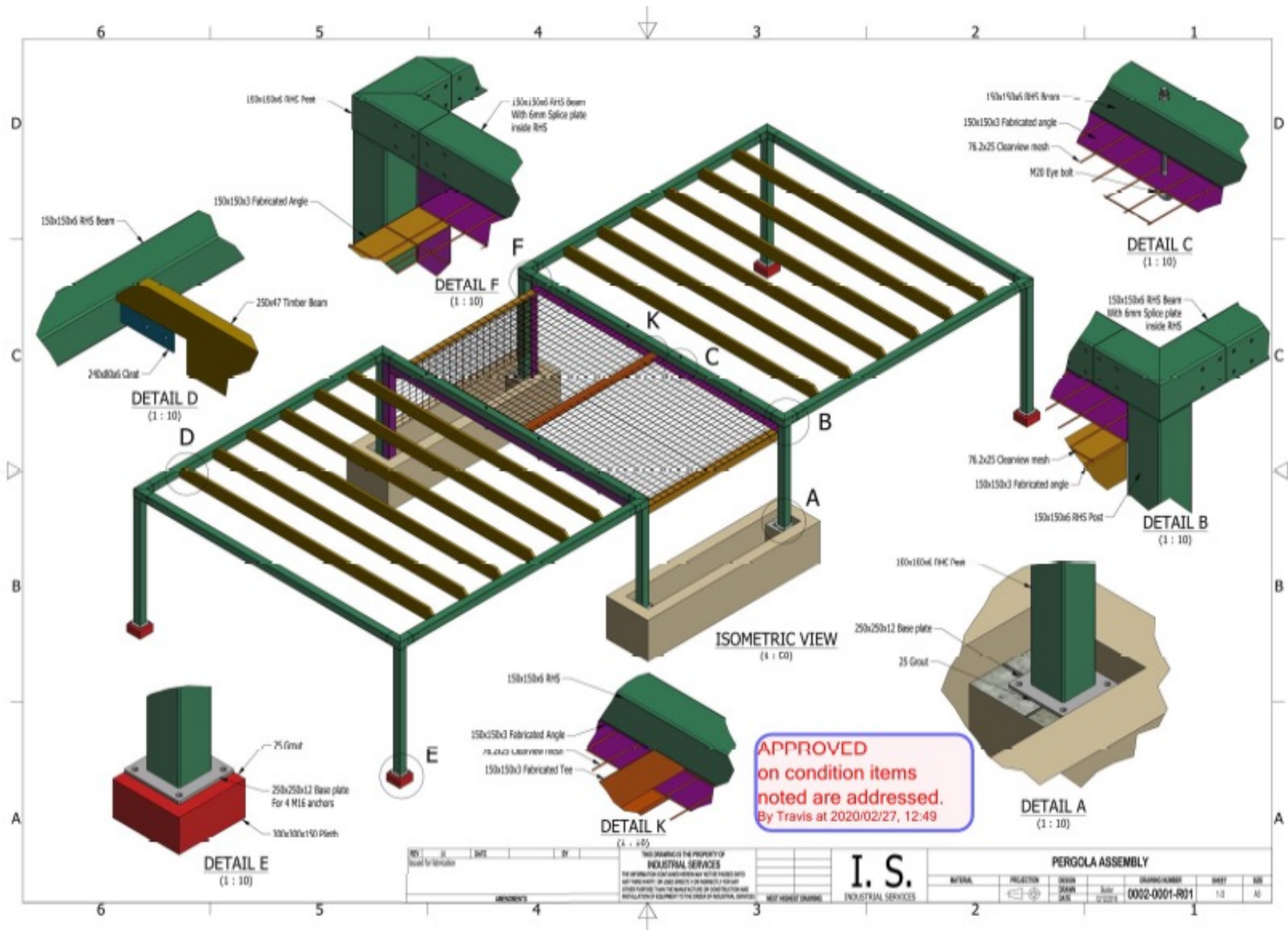
steel AWARDS
2022
recognising and rewarding excellence

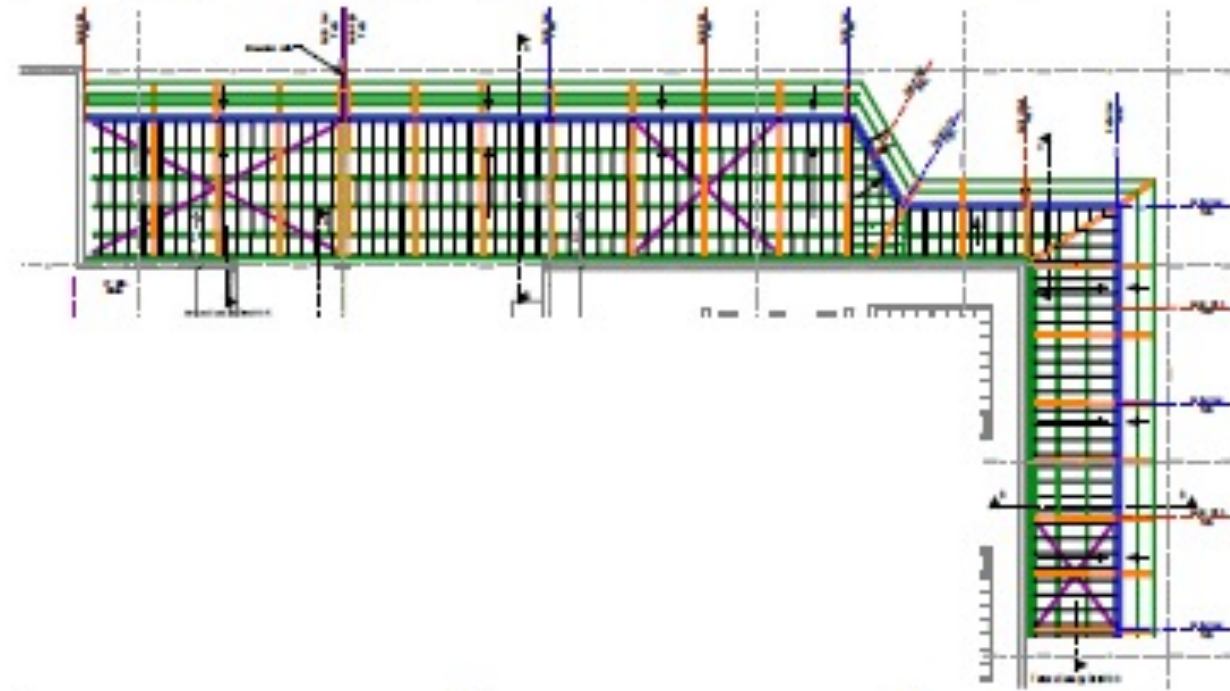
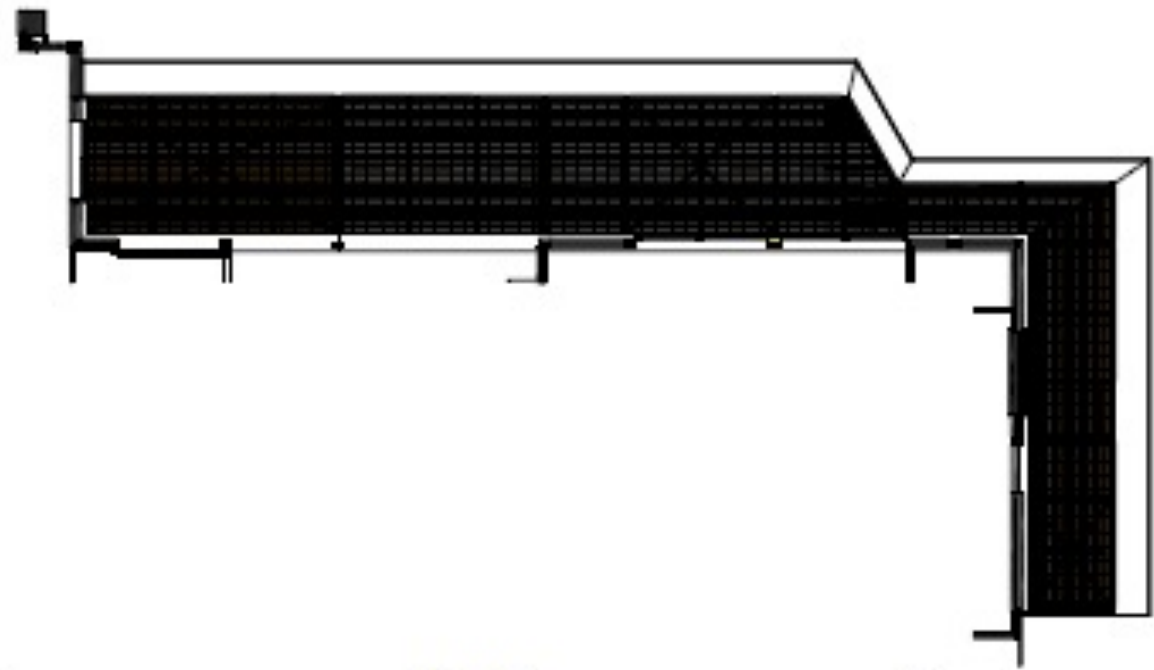
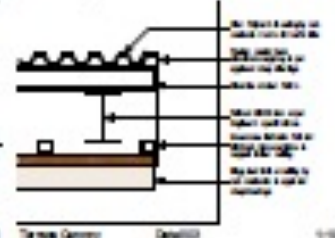
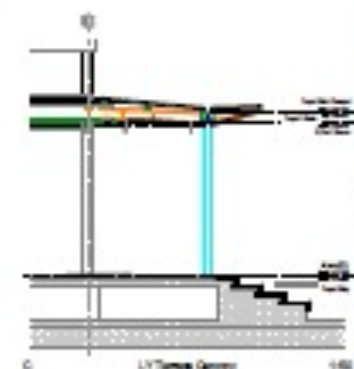
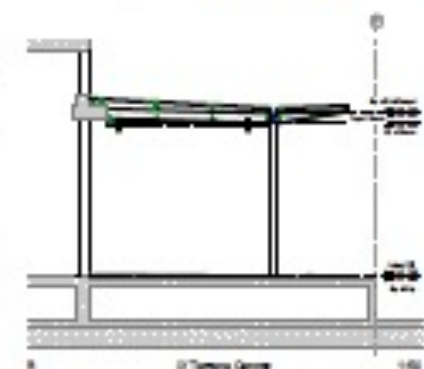
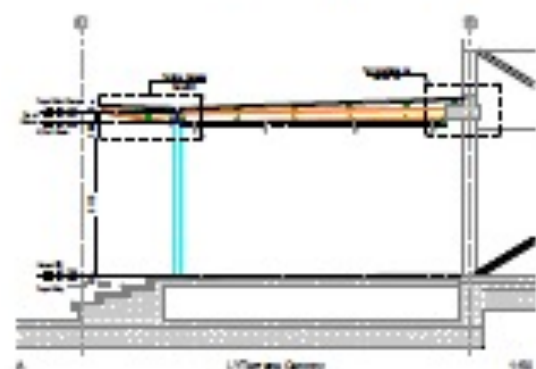
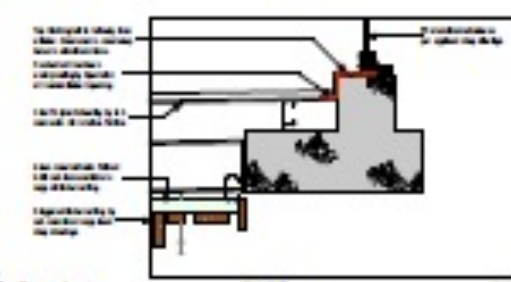
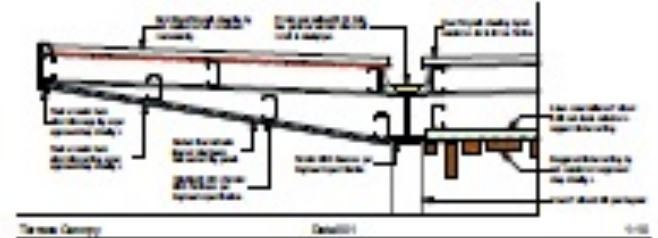
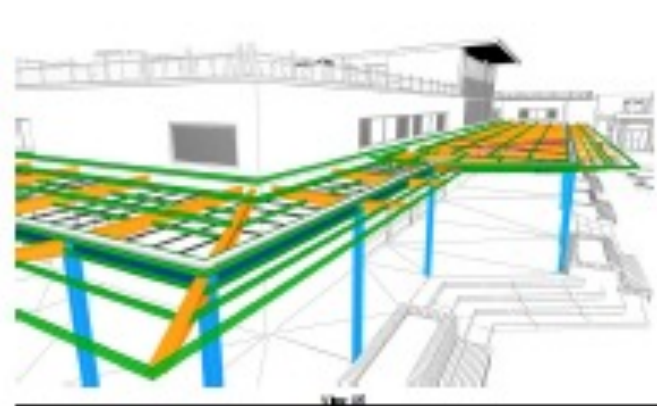
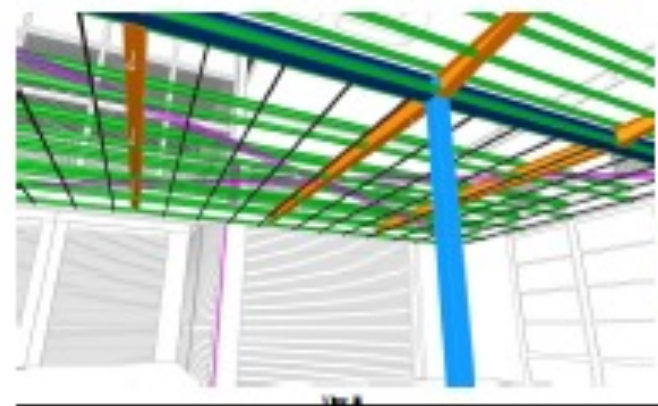
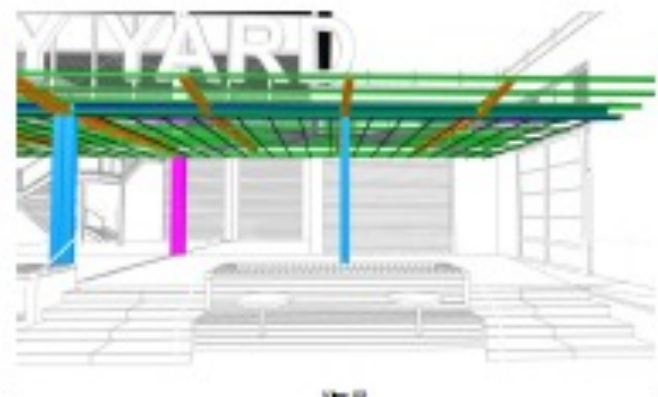
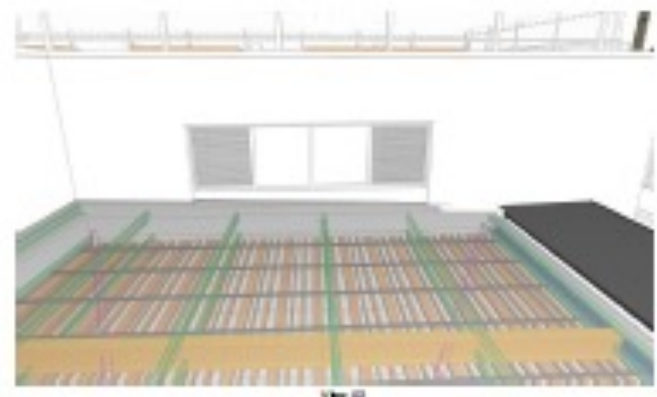
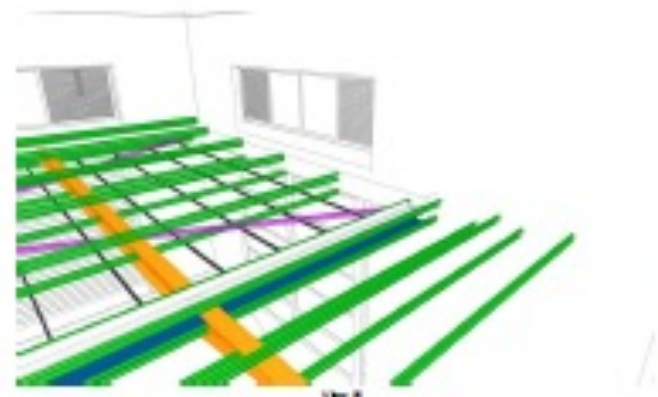
STRUCTURAL FRAMING

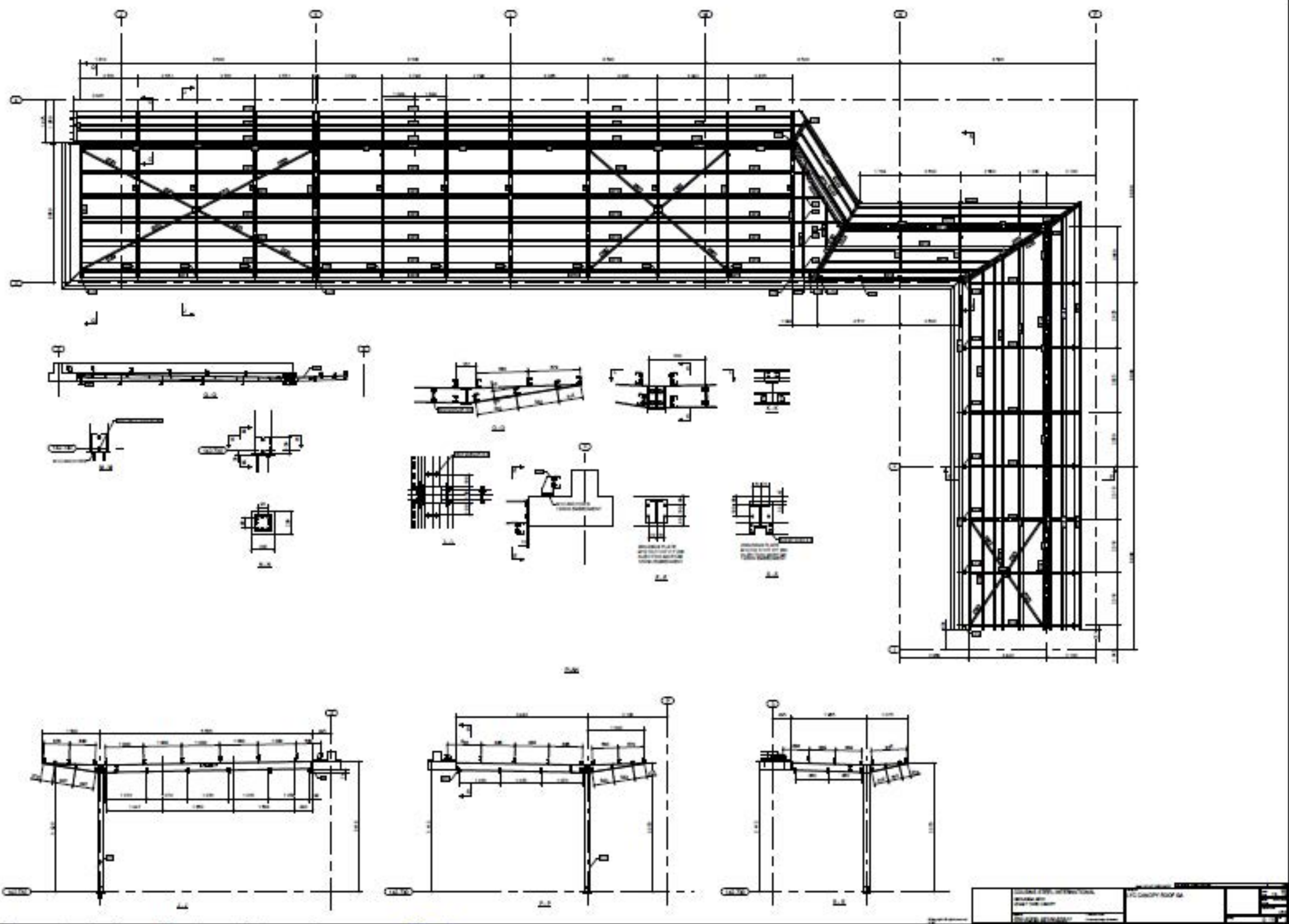
STRUCTURAL ENGINEER: STRUXIT

STEELWORK CONTRACTOR: CSI

STEEL DETAILER: CSI



[illegible][illegible]





steel AWARDS
2022
recognising and rewarding excellence

FABRICATION

STEELWORK CONTRACTOR: CSI

ERECTION / CONSTRUCTION / INSTALLATION

CONTRACTOR: CSI

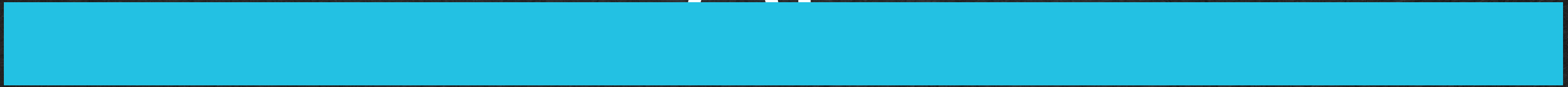
CHALLENGES AND SOLUTIONS



THE BENEFITS OF STEEL IN THIS APPLICATION



WHAT WE'RE PROUD
OF



QUESTIONS?

